

Institute for Community Research and Development

London's children and young people who are not British citizens:

Coram CLC Seminar 17th January 2020



Context

- Commissioned as part of the Mayor of London's Citizenship and Integration Initiative (CII).
- A core aim of the initiative was to support young Londoners seeking routes to citizenship.



Research Questions

1. What is the size of the foreign national population?
2. What is the size of the EEA+ national population?
3. What is the size of the undocumented population?
4. What is the size of the population of children and young people who have taken up regularisation pathways?



UNDOCUMENTED POPULATION



Review of existing research

- Diversity of experiences and migration histories
- Fluidity of status over time and within families
- Complexity of capturing experiences



Previous research: Undocumented population

Undocumented population (UK)	Central estimate
Woodbridge (2005) estimate at end-2001	430,000
Gordon et al. (2009) estimate at end-2007	618,000 (including 85,000 UK-born)

Aged under 19 (UK)	Central estimate
Sigona and Hughes (2010) elaboration of Gordon et al. (2009) estimate at end-2007	155,000 (of whom 85,000 UK-born)
Sigona and Hughes (2012) revised estimate at end March 2011	120,000 (of whom 60-65,000 UK-born)
Dexter et al. (2011) based on 2011 census data	144,000 (England and Wales)

Undocumented population (London)	Central estimate
Gordon et al. (2009) estimate at end-2007	442,000 (of whom 61,000 UK-born)

Aged under 19 (London)	Central estimate
Dexter et al. (2011) based on 2011 census data	58,000
Thomas and Jolly (2018) estimate at early to mid-2018	90,000



Limitations and challenges

- Definitions
- Geographical focus
- Foreign-born vs. foreign national data
- Self-reporting
- Hidden populations



'Counting the uncountable'

Direct:

- Delphi method
- Snowballing

Indirect:

- Capture-recapture
- Sex-ratio
- Employer surveys
- Residual method



Woodbridge (2005)



Sizing the unauthorised (illegal)
migrant population in the
United Kingdom in 2001

Jo Woodbridge

$$FB = [L - (M_L + E_L)] + [T - (M_T + E_T)] + [Q - (M_Q + E_Q)] + R$$

where:

FB = Foreign-born

L = Permanent legal migrants

T = Temporary legal migrants

Q = Quasi-legal migrants

M = Adjustment for mortality to migrants in the group represented by the subscript

E = Adjustment for emigration of migrants in the group represented by the subscript

R = Residual foreign-born (unauthorised migrants)



Undocumented population in UK

	Lower	Central	Higher
Undocumented migrants in the UK*	594,000	674,000	745,000

*Not including UK born children of parents who are undocumented



- 1) Foreign-born population with settlement in the UK
- +
- 2) Foreign-born EEA+ citizens in the UK
-
- 3) Emigration of foreign born population with settlement
-
- 4) Deaths of regular foreign born population with settlement
- =
- 5) Estimated total long term regularised population (5 = 1 + 2 - 3 - 4)**

- 6) Temporary migrants with unexpired leave
- +
- 7) Temporary migrants with pending applications for leave to remain
-
- 8) Emigration of temporary migrants
-
- 9) Deaths of temporary migrants
- =
- 10) Estimated total temporary regular migrant population (10 = 6 + 7 - 8 - 9)**
- 11) Estimated total regular migrant population (11 = 5 + 10)**
- 12) Estimated undercount of irregular migrants in census
- 13) Total foreign-born population in the UK**
- 14) Estimated undocumented migrant population in the UK (14 = 13 - 11 + 12)**



Calculating deaths of foreign-born population with settlement

	Lower	Central	Higher
Deaths of foreign-born population with settlement	41,000	43,000	55,000



Undocumented children in the UK

	Lower	Central	Higher
Undocumented children in the UK (Including UK-born children)	190,000	215,000	241,000



Undocumented Young People in the UK

	Lower	Central	Higher
Undocumented young people in the UK (Including UK-born young people)	59,000	117,000	176,000



Undocumented population in London

	Lower	Central	Higher
Undocumented migrants in London (Including UK-born children)	350,000	397,000	478,000

	Lower	Central	Higher
Undocumented children in London (including UK-born children)	94,000	107,000	120,000

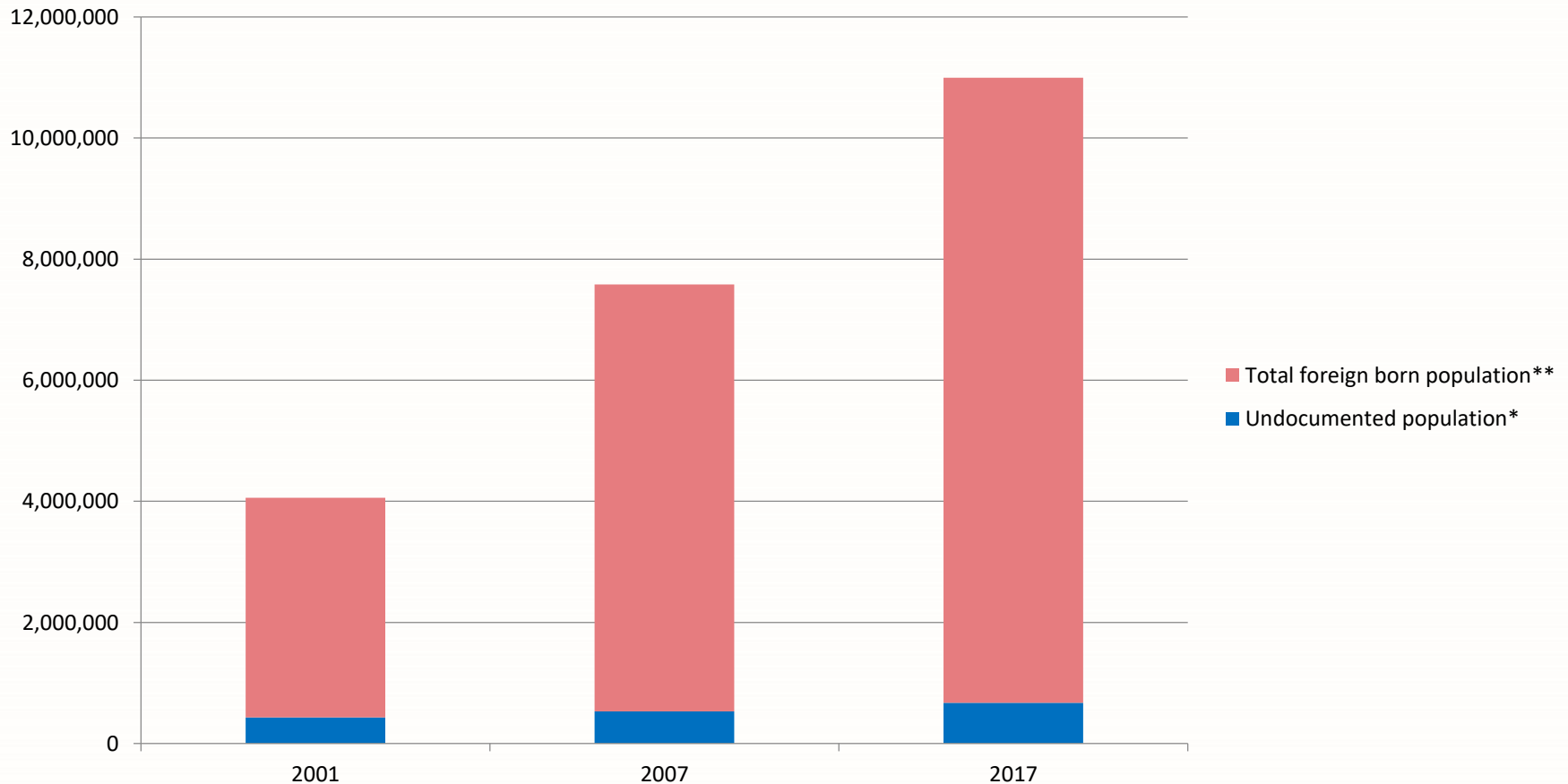
	Lower	Central	Higher
Undocumented migrant young people in London (including UK-born young people)	22,000	26,000	29,000



APPLICATION OF THE DATA



Size of undocumented population compared to total migrant population





Where are undocumented migrants living?

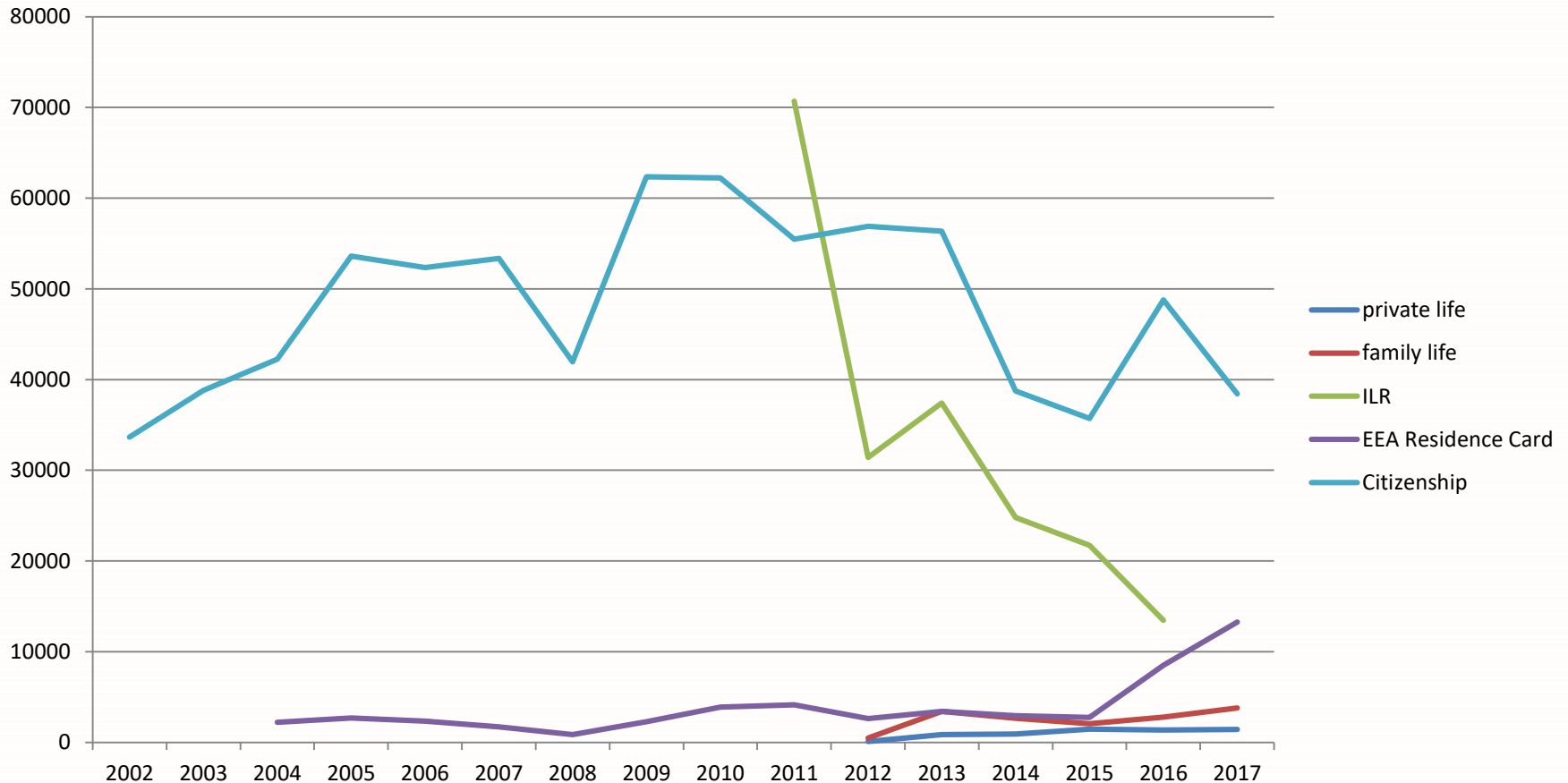


Legend

Equal ranges	Low (>=)	(<) High	Occurrences
1	0.0	6.2	(17)
2	6.2	12.4	(10)
3	12.4	18.5	(5)
4	18.5	24.7	(1)
0	n/a	n/a	(0)



Total annual grants by different regularisation routes





Potential eligible population as proportion of grants

