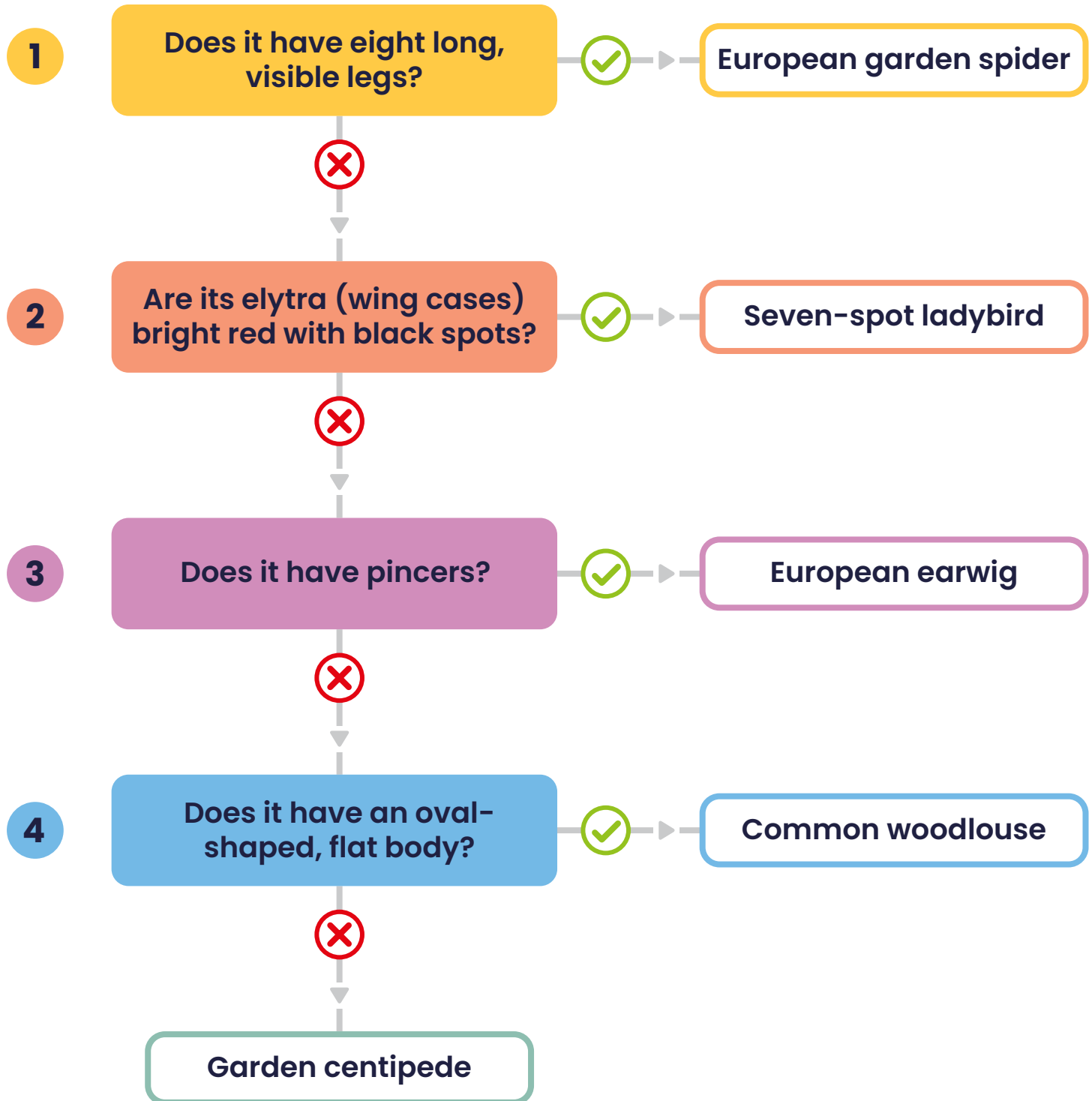


# Stats in the Wild

## Activity ①

### Creature Features Classifying Arthropods

#### Flowchart



## Dichotomous Key

**1**

**a**

The arthropod has eight long, visible legs



European garden spider

**b**

The arthropod has a different number of legs, or they can't be seen



Go to **2**

**2**

**a**

The arthropod's elytra (wing case) is a bright red colour with black spots



Seven-spot ladybird

**b**

The arthropod is brown or grey



Go to **3**

**3**

**a**

The arthropod has pincers at the front



European earwig

**b**

The arthropod does not have pincers



Go to **4**

**4**

**a**

The arthropod has an oval-shaped, flat body



Common woodlouse

**b**

The arthropod has a long body

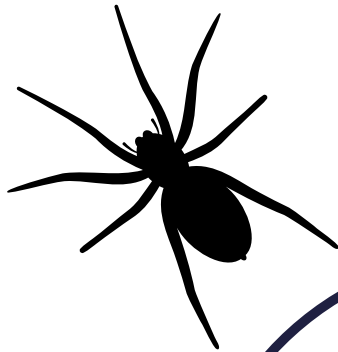


Garden centipede

**CHECK**

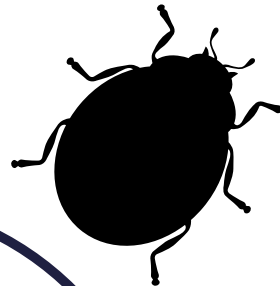
Does it have eight long, visible legs?

European garden spider

**CHECK**

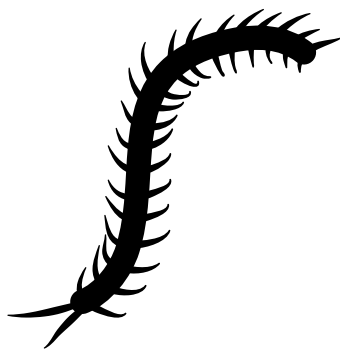
Are its elytra (wing cases) bright red with black spots?

Seven-spot ladybird



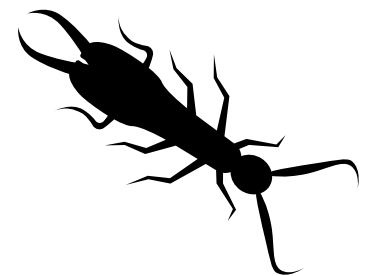
Start here

What does the arthropod's rough shape look like?

**CHECK**

Does it have a long body?

Garden centipede

**CHECK**

Does it have pincers?

European earwig

**CHECK**

Does it have an oval-shaped, flat body?

Common woodlouse