

INTERNATIONAL CONFERENCE OF
THE ROYAL STATISTICAL SOCIETY

RSS
2009

*Statistics in
a changing
society*

175 years of
progress

Conference directory

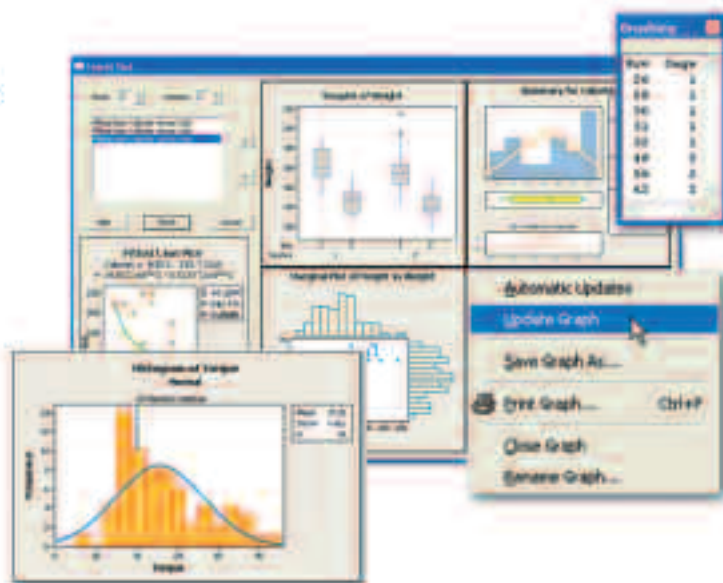




Encouraging Excellence

The Leading Package for Statistics Education Worldwide

- ▶ Comprehensive Suite of Statistical Methods
- ▶ Built-in Guidance
- ▶ Inexpensive and Accessible
- ▶ Free Technical Support
- ▶ Widely Used in Business and Industry



Learn more about Minitab 15 and download a free trial version at www.minitab.com

Minitab 
QUALITY. ANALYSIS. RESULTS.

EMEA Office UK
Minitab Ltd.
Tel: +44 (0)24 7643 7500
Fax: +44 (0)24 7665 2888
E-mail: sales@minitab.co.uk

French Office
Minitab SARL
Tel: +33 (0) 1 55 33 12 62
Fax: +33 (0) 1 55 33 12 39
E-mail: bienvenue@minitab.fr

US Office
Minitab Inc.
Tel: +1.814.238.3280
Fax: +1.814.238.4383
E-mail: sales@minitab.com

Ceud Mile Failte an Dùn Èideann [A hundred thousand welcomes to Edinburgh]

...but you don't need to be bilingual to enjoy the RSS 175th anniversary conference here in Edinburgh.

As well as a packed programme of sessions covering Statistics in a Changing Society over the last 175 years, we have strived to give delegates a taste of our Scottish Heritage.

We start with the reception in Edinburgh Castle with spectacular views out over Auld Reekie [Scots for 'old smoky'], where 450 delegates will be welcomed by the Scottish Minister for Enterprise, Energy & Tourism, Jim Mather. (His portfolio covers Official Statistics).

We end up at the foot of the Royal Mile (and round the corner) at Our Dynamic Earth for the conference dinner. In between we'll have some fun and dance at the ceilidh to Bella McNab Band (guidance provided), a sail on the Forth, tracing Scottish roots at Register House, or one of the many walking tours in the 'auld toon'.

Finally, a few words you may hear while at the conference and not be sure what they mean:

Dreich – what the weather is likely to be while we are in the sessions. No chance of an Indian summer this year

Bevied – hopefully few of the young statisticians will get to this state on Wednesday night after partaking of beers, wines and spirits

Stocious – another word for the above state

Birl – twirl your partner in Strip the Willow at the ceilidh

Smashin – awesome – how you'll describe the conference on Friday.

Mary Sweetland

Chair, local co-ordinating committee

Local co-ordinating committee members

Mary Sweetland, NHS Scotland, ISD (Chairman)

Katy Barratt, Scottish Government

Dariusz Blaszczak, NHS Scotland, ISD

Natalia Bochkina, Edinburgh University

Anthony Fielding, retired, Birmingham University

Alan Forrest, Royal Bank of Scotland

Scott Heald, NHS Scotland, ISD

Cecilia MacIntyre, General Registrar's Office
Scotland

Brian Miller, Institute of Occupational Medicine

Gillian Raab, Statistical Consultant

Jill Sales, Biomathematics & Statistics Scotland

Mairi Spowage, Scottish Government

Jill Tefer, Statistical Consultant

The Royal Statistical Society acknowledges with thanks the support through sponsorship of the following organisations



Contents

5	General information
6	Poster presenters
7	Session timings
	Fringe meeting details
Conference programme	
8–9	Tuesday morning
10–11	Tuesday afternoon
12–13	Wednesday morning
14–15	Wednesday afternoon
16–17	Thursday morning
18–19	Thursday afternoon
20–21	Friday morning
22–23	Exhibition plan
24–25	Restaurants and venues
26	Thanks and acknowledgements



Become a Fellow

Special conference offer!

Join the RSS today for 2010 – and receive the last **four** months of 2009 **free!**

For just £82.00 (or less!*) you will receive:

- Journal of the Royal Statistical Society
- Significance, the Society's quarterly magazine
- RSS News and RSSeNews, the Society's newsletter
- Discounts on Society conferences
- and many more benefits

* reduced rates apply for students, retired and newly graduated members, and those in EDA countries

**No further
subscription
fees payable
until 2011.**

**Please ask at the RSS
stand for more
information and an
application form!**

General information

Badges

Conference attendees are encouraged to wear their badges and lanyards at all times while in the Conference Centre and at the evening social events. Catering staff may not be able to serve individuals who cannot be identified as conference attendees.

Lost badges will be replaced at the discretion of the conference organiser. A replacement fee may be charged.

Getting to social events

As all the main social events are located centrally off the Royal Mile we will not be organising transport for delegates. Members of the organising committee and RSS staff members will be located on route to each venue to help guide you to the correct buildings and entrances. The exception to this will be the Wednesday evening boat trip for which coach transport has been arranged – please see your event ticket for details.

Internet access

The main conference venue Appleton Tower has wi-fi access. Passes will cost £3 per day.

Any delegates resident at Pollock Halls can purchase a 24 hour pass from the main reception there, which can also be used at Appleton.

There will also be a small number of computers in the exhibition and refreshments area - login passes cost £1 per day.

Local information

Members of the local organising committee will be happy to offer help and information on local facilities – they can be identified by their ‘Organiser’ badges.

The Edinburgh Convention Bureau will also have an information stand in the exhibition area, which will be staffed on Tuesday and Wednesday.

Luggage

We are not able to offer a luggage store at the conference venue – on your day of departure please make arrangements to leave your luggage at your accommodation.

Lunch

Lunch will be served in Teviot Row House – a two minute walk from Appleton Tower. Dessert and tea/coffee will be served back in the exhibition area in Appleton.

Mobile phones

We ask that you switch off your mobile phones when you are in sessions.

Online Tools

The conference blog can be found at www.rssconference.blogspot.com and you can also follow proceedings on Twitter: RSSConf2009. The RSSeNEWS site (www.rssenews.org.uk) has links to the blog and forums on conference proceedings for members.

Photography

The Society will have a photographer (www.simonwilliamsphotography.co.uk) taking photographs in most sessions and at social events. The Society may use photographs taken in publications and in future publicity. If you would prefer your photograph not to be used in this way please contact the conference office.

Sessions

Most sessions will be held in one of the five lecture theatres on the ground and first floor of Appleton Tower. In addition the opening plenary session and a set of parallel sessions on Tuesday will take place in the David Hume Lecture Theatre block next door and on Wednesday and Thursday parallel sessions will also take place in room 2.12 on the second floor in Appleton

Poster presentations, 5pm, Tuesday 8 September

The following presenters will give a two-minute overview of their poster presentation which will be on display at the poster reception which follows at The Hub.

(The final running order will be available in the conference pack.)

Faridatulazna Ahmad

Qazi Ali

Paul Askew

Ragab Ayman Fouad

Jessica Barrett

Carlo Giovanni Camarda

Ruoling Chen

Frances Denny

Wendy Dickinson

Jim Freeman

Rhian Gabe

Carolina Garcia-Martos

Ignacio Ruiz Guerra

Beverley Hale

Hisham Abdel Hamid

Marc Henrion

Martyn Hill

Kenneth Humphreys

Shereen Hussein

Robert Kunst

Esther Laird

Gareth Lui-Evans

Victor Manuel Martin Lopez

Anna & Massimiliano Manca-Mascherini

Fiona McElduff (winner, best poster RSC 2009)

Elizabeth Merrall

Brian Miller

Valentin Molina Moreno

Isabel Natário

Tereza Neocleous

Andrea Neri

Angela Noufaily

Omar Paccagnella

Krishna Palipudi

Michail Papatomas

Jenny Petersson

Eric Pokem

Athanase Polymenis

Mahama Abdul Salam

María Jesús Sánchez

Shah-Jalal Sarker

Olanrewaju Shittu

Inês Sousa

Koduri Srinivas

Rutang Thanawalla

Francois van Graan

Cristiano Varin

Biatat Viani

Ma Xiaojuan

Zhengzheng Zhang

LUNCHTIME FRINGE MEETING

Wednesday 9 September,
13.30, Room 2.12 Appleton Tower

Michelle Carolan
Susan Crouch
Jamie Tratalos
(Dr Foster Intelligence)

*Analysis needs of healthcare organisations
and professionals*

The NHS Next Stage Review led by Lord Darzi, has refocused minds on the challenge of delivering high quality care for all and the need for making the information about the quality of care widely available in order to reveal variations.

We will discuss the varied information needs of healthcare organisations and professionals and the data underpinning them. Ranging from routine reporting to comprehensive programmes aimed to tackle health inequalities.

Session timings

Plenary talks

will last for 30-45 minutes plus time for questions and discussion.

Invited talks

will last between 20 and 30 minutes plus time for questions and discussion.

Contributed talks

will last for 20 minutes including time for questions and discussion.



scotstat
CONSULTING ON SCOTTISH STATISTICS

www.scotland.gov.uk/scotstat

ScotStat is the network for consulting data users, data providers and other stakeholders about official statistics in Scotland. ScotStat has a dedicated website and a register of users.

ScotStat allows you to:

- register which Scottish official statistics you are interested in
- keep up-to-date with developments
- receive email updates
- let us know what you think about Scottish official statistics
- contact other ScotStat members

scotstat@scotland.gsi.gov.uk

Parallel session D
[Appleton 2]

Session 2D

**Statistics & public accountability
(invited)****Alysson Pollock***Statistics & public accountability: monitoring
and evaluating new services delivery policies
in the NHS***Alison MacFarlane**

(City University London)

*How did we get here and where are we
going: routine health service and public
health data*Parallel session E
[Appleton 3]

Session 2E

Health-related 2 (contributed)**Jane Warwick**

(Queen Mary University of London)

*Mammographic breast density: why
the most precise measure may not be
the most clinically useful***William D Grant**

(SUNY Upstate Medical University)

*The statistician and small clinical trials:
tales from the front lines***Nick Steen**

(University of Newcastle upon Tyne)

*The role of the patient preference
arms in the analysis of a
comprehensive cohort study***Chris Roberts**

(University of Manchester)

*The design implications of care
provider variation for non-
pharmacological treatment trials*Parallel session F
[David Hume LT A]

Session 2F

**Statistical challenges in brain imaging
(contributed)****Thomas Nichols**

(GlaxoSmithKline)

*Statistical opportunities in brain imaging:
a case study with neuroimaging meta
analysis***John Aston**

(University of Warwick)

*Twice the fun-ctional: using functional
principal component analysis in functional
neuroimaging***Giovanni Montana**

(Imperial College London)

*Genomewide multivariate association
discovery in imaging genetics studies*

...tea...



Wiley-Blackwell have kindly
provided the prizes
for the best poster

*See page 6 for the list of poster presenters

	Parallel session A [Appleton 4]	Parallel session B [Appleton 5]	Parallel session C [Appleton 1]
9.00 to 10.00	<p>PLENARY 2: John Beddington Chief scientific advisor</p>		
10.00 to 11.20	<p>Session 3A Retrospective read paper meeting (invited)</p> <p>Yoav Benjamini (Tel Aviv University) <i>Discovering the false discovery rate</i></p>	<p>Session 3B International statistics 2 (invited)</p> <p>Sally C Morton (American Statistical Association/RTI International) <i>Present and future challenges in statistics, and collaborative solutions</i></p> <p>Marie Bohatá (EuroStat) <i>The role of the European Union in mastering the challenges for official statistics</i></p>	<p>Session 3C Agriculture and environment (contributed)</p> <p>Jon Barry (Cefas) A model-based framework for the estimation of species richness from grab samples</p> <p>Esben Budtz-Joergensen (Department of Biostatistics, University of Copenhagen) <i>Different approaches to model averaging in environmental risk assessment</i></p> <p>Sebastian Dietz (University of Passau, Germany) <i>A multivariate cointegration approach to the influence of bioethanol and biodiesel on the price levels of certain agricultural commodities</i></p> <p>Alan Kimber (University of Southampton) <i>Ripeness of bananas and manure: a prediction problem using a least squares support vector machine</i></p>
Break...break...break....break...break...break...break....break...break...break...break....break...break...break...break....break			
11.40 to 13.00	<p>Session 4A The surveillance society and the role of the statistician (Invited)</p> <p>Stephen Penneck (ONS Director of Methodology)</p> <p>Ivor Goddard (former RSS Director General)</p> <p>Andrew Garratt (RSS Press and Public Affairs Officer)</p>	<p>Session 4B Statistical image analysis (invited)</p> <p>Kanti V Mardia (University of Leeds) <i>Has there been any real impact of statistics on image analysis in the last three decades?</i></p> <p>Elke Thönnnes (Department of Statistics, University of Warwick) <i>Characterising HRCT lung images using integral geometry</i></p> <p>Gerie van der Heijden (Netherlands) <i>Particle filters for controlling robots</i></p>	<p>Session 4C Agricultural statistics (invited)</p> <p>Roger Payne (VSN International) <i>90 years of research and collaboration by statisticians in agricultural research</i></p> <p>Iain McKendrick (Biomathematics and Statistics Scotland) <i>Statistical models of veterinary diagnostic test characteristics: applying statistics for farmers and policy makers</i></p> <p>Martin Boer (Biometris, WUR, Netherlands) <i>A mixed-model quantitative trait loci (QTL) analysis for multiple environment trial data</i></p>

lunch...lunch....lunch...lunch...lunch....lunch...lunch...lunch....lunch...lunch...lunch....lunch...lunch...lunch....lunch...lunch...lu

Parallel session D
[Appleton 2]

Parallel session E
[Appleton 3]

Parallel session F
[Appleton 2.12]

LUNCHTIME FRINGE MEETING

13.30, ROOM 2.12 APPLETON TOWER

Michelle Carolan
Susan Crouch
Jamie Tratalos
(Dr Foster Intelligence)

Analysis needs of healthcare organisations and professionals

The NHS Next Stage Review led by Lord Darzi, has refocused minds on the challenge of delivering high quality care for all and the need for making the information about the quality of care widely available in order to reveal variations.

We will discuss the varied information needs of healthcare organisations and professionals and the data underpinning them. Ranging from routine reporting to comprehensive programmes aimed to tackle health inequalities.

Session 3D
General (contributed) 2

Jian Zhang
(University of York)
Semiparametric plaid models with applications

Neil Spencer
(University of Hertfordshire)
Detecting misspecification in the multilevel model using the forward search

Biiman Chakrobarty
(University of Birmingham)
On a multivariate generalisation of quantile-quantile plot

Session 3E
Complex interventions in primary care (invited)

Michael J Campbell
(University of Sheffield)
Patient decision aids in primary care

Nigel Stallard
(Warwick Medical School, The University of Warwick)
Designing clinical trials of complex interventions – what can we learn from adaptive designs for drug trials?

Toby Prevost
(King's College London)
Meta-analysis methods for planning and evaluating behaviour-change interventions

Session 4F
Census and crime (contributed)

Jane Naylor
(Office for National Statistics)
Balancing risk and utility - statistical disclosure control for the 2011 UK Census

Elizabeth Merrall
(MRC Biostatistics Unit)
Multi-modal sentencing – potential for reduced pressure on the prison system and an in-built randomised controlled trial to assess impact on re-incarceration rates and costs

Session 4D
Statistical analysis of longitudinal data (contributed)

Dylan Kneale (Institute of Education, University of London)
A cross-cohort comparison to examine changing patterns in leaving the parental home in Britain across three decades (1974-2004)

Paola Zaninotto (UCL)
Socioeconomic status and age trajectories of health among the older

Jenny Head (UCL)
Estimating social inequalities in trajectories of health decline in studies with informative drop-out: a sensitivity analysis

Amanda Sacker (University of Essex)
A multiple process latent transition model of poverty and health

Session 4E
Health-related 3 (contributed)

Stephen Duffy
(Barts and the London School of Medicine and Dentistry)
Problems and methods in deciding frequency of cancer screening

Marc Saez
(GRECS, University of Girona, Spain)
Spatial variability in relative survival from female breast cancer

Paddy Farrington
(Open University)
Self-controlled case series analyses with event-dependent observation periods

Karen J Cairns
(Queens University Belfast)
Using discrete event simulation to assess the impact of a colorectal screening programme

...lunch...lunch...lunch...lunch...lunch...lunch...lunch...lunch...lunch...lunch...lunch...lunch...lunch...lunch...lunch...lunch...

Parallel session D
[Appleton 2]

Session 5D
General (contributed) 3

David Firth

(University of Warwick)

Do journal rankings reflect research quality?

John Copas

(University of Warwick)

One hundred years of goodness of fit tests: time to ask what they are for?

Dankmar Bohning

(University of Reading)

Evaluating the accuracy of diagnostic systems by means of meta-analysis

Joseph Gastwirth

(George Washington University)

Using a latent class screening test model to estimate the fraction of fake art offered for sale on eBay: application to the works of Henry Moore

Parallel session E
[Appleton 3]

Session 5E
Health-related 4 (contributed)

Paul Baxter

(University of Leeds Biostatistics Unit)

Statistical issues for the assessment of inequalities in cardiac care across England and Wales

Evangelos Kontopantelis

(National Primary Care R&D Centre)

Investigating the impact of the Quality and Outcomes Framework on the quality of primary care

David Reeves

(National Primary Care R&D Centre)

Uses and abuses of Interrupted Time Series to evaluate national programmes: an example using the Quality and Outcomes Framework in England

James P Bentham

(Imperial College London)

Assessing results produced by a text mining algorithm

Parallel session F
[Appleton 2.12]

Session 5F
Bioinformatics (contributed)

Matthew Sperrin

(Lancaster University)

Direct effect testing: a two-stage procedure for effect size and importance with correlated binary predictors of a binary response

Christopher Fallaize

(University of Leeds)

Hierarchical Bayesian modelling of pharmacophores

Alexey Koloydenko

(Royal Holloway, University of London)

An asymptotic theory for improving inference in Hidden Markov Models

Michael Schimek

(Medical University of Graz and Danube University Krems, Austria)

An inference procedure for random degeneration of paired rank lists and its application in bioinformatics

Session 6D
History of statistics (invited)

Eileen Magnello

(University College London)

The early-Victorian statistical societies and the establishment of the Statistical Society of London

Chris Pritchard

(McLaren High School, Callander / Scottish Mathematical Council)

The early history of the Ogive

Session 6E
Health-related 5 (contributed)

Dilip Nath

(Gauhati University)

Equality in safe delivery and its determinants in India

Mona Kanaan

(University of York)

Effect of doctors' training in interpersonal and communication skills on women's satisfaction at labor and delivery: a stepped wedge cluster randomized trial in Damascus, Syria

Krista Gile

(Nuffield College, University of Oxford)

Using a network model for prevalence estimation from respondent-driven sampling in hard-to-reach populations

Krista Fischer

(MRC Biostatistics Unit, Cambridge)

Effects of blinding in a randomised trial on postmenopausal hormone therapy

Parallel session D
[Appleton 2]

Parallel session E
[Appleton 3]

Parallel session F
[Appleton 2.12]

.break...break...break....break...break...break...break....break...break...break...break....break...break...break...break....

Session 7D
General (contributed) 4

Juan José Fernández-Durán
(Department of Statistics, ITAM, Mexico)
Circular (angular) data

Markus Zwick
(Federal Statistical Office Germany)
*Business micro data: access and
anonymisation*

Gang Xu
(University of Lancaster)
*Information flow, volatility measurement
and jump prediction*

Session 7E
Health-related 6 (contributed)

Philip Sedgwick
(St George's, University of London)
*Talking about risk: Integrating the
teaching of medical statistics with
clinical communication*

Kimberley Kavanagh
(University of Strathclyde)
*Assessing the risk of infertility in women
following chlamydial infection using
Bayesian synthesis*

Georgios Effraimidis
(Vrije Universiteit Amsterdam)
*A semiparametric test for independence
in competing risk models*

Session 7F
**Statistics in educational research
(contributed)**

Caroline Harper
(National Audit Office)
*Statistics on young people not in
education, employment or training (NEET)*

Sandra Johnson
(Assessment Europe)
*Quantifying and interpreting
assessment reliability*

Session 8D
Climate change (contributed)

Philip Jonathan
(Shell Research)
*A spatio-directional model for extreme
waves in the Gulf of Mexico*

David Thomson
(Queens University, Ontario)
*Spectral analysis of
Burgundy pinot noir
grape harvest dates*

Lynsey McColl
(Met Office Hadley Centre)
*Quantifying the uncertainties
of climate change: from global
temperatures to local impacts*

Session 8E
Exploding myths (contributed)

Rosa Fernandez
(SKOPE, University of Oxford)
Computers at work: blessing or curse?

Paul Marchant
(Leeds Metropolitan University)
*The evaluation of an area-level crime
reduction intervention*

Michael Anyadike-Danes
(Economic Research Institute of Northern
Ireland)
*Who creates the jobs? Survival and
growth of the quarter of the million
British firms born in 1998*

Session 8F
General (contributed) 5

Samuel Peck
(University of Leeds)
*Multiscale imputation of irregular spatial
data*

Denise Brown
(University of Glasgow)
*Curve extraction and the
analysis of facial shape*

Andrew Wood
(University of Nottingham)
*Saddlepoint approximations for
transition densities in stochastic
differential equations*

ch....lunch...lunch...lunch....lunch...lunch...lunch....lunch...lunch...lunch....lunch...lunch...lunch...lunch...lunch...

	Parallel session A [Appleton 4]	Parallel session B [Appleton 5]	Parallel session C [Appleton 1]
14.00 to 15.00	<p>Session 9A Official statistics (invited)</p> <p>Sir Michael Scholar <i>UK Statistics Authority: priorities, progress and change</i></p>	<p>Session 9B Best of RSC2009 (competition winners at the 2009 Research Students Conference)</p> <p>Andrew Simpkin (National University of Ireland Galway) <i>An additive approach to derivative estimation</i></p> <p>Andrew Smith (University of Bristol) Nonparametric regression on a graph</p> <p>Jennifer Rogers (University of Warwick) <i>Joint modelling of event counts and survival times</i></p>	<p>Session 9C Climate change 2 (contributed)</p> <p>Simon Gillam (Forestry Commission) <i>Forest inventories – past and present</i></p> <p>Adrian Roberts (Biomathematics and Statistics Scotland) <i>Comparison of statistical methods for phenology</i></p> <p>Irina Foss (Environmental Research Institute, North Highland College, UHI Millennium Institute) <i>Eigen techniques as tools to study the decadal variability and predictability of Scottish temperature</i></p>
	<p>Official Statistics Section AGM, 15.00 (during the tea break) in Appleton 4</p>		
15.30 to 16.50	<p>Session 10A Professional statistical standards (invited)</p> <p>Andy Garrett (Quintiles Limited) <i>Counterbalance – weighing up the need for professional statisticians in a global environment</i></p> <p>Stephen Penneck (Office for National Statistics) <i>Continuing professional development (CPD) for statisticians in government</i></p> <p>Ron Wasserstein (American Statistical Association) <i>Professional development and the American Statistical Association</i></p>	<p>Session 10B Statistics In educational research 2 (invited)</p> <p>Rebecca Pillinger (University of Bristol) <i>Measuring ethnic segregation in schools: a model-based approach</i></p> <p>David J Bartholmew (London School of Economics) <i>Reflections on the measurement of ability</i></p> <p>Linda Croxford (University of Edinburgh) <i>Governing by numbers – performance management in school education</i></p>	<p>Session 10C Climate change (Invited)</p> <p>Roger Street (UKCIP) <i>Users' perspectives on UKCP09, the latest set of climate projections for the UK</i></p> <p>David Sexton (Met Office) <i>Making probabilistic climate projections for the UK</i></p> <p>Jonathan Rougier (University of Bristol) <i>The role of low-order stochastic climate models</i></p>
17.00 to 18.00	<p>Plenary 6 David Wishart The flavour of whisky – a talk and tutored tasting</p>		

Evening: conference dinner at Our Dynamic Earth....Evening: conference dinner at Our Dynamic Earth.....Evening: confer

9:40 to 10:40	[Appleton 4]	[Appleton 5]
	<p style="text-align: center;">Session 11A</p> <p style="text-align: center;">Hot topic: swine flu (Invited)</p> <p style="text-align: center;">Chair: Sir John Savill (Chief scientist, Scottish Government Health Directorates)</p> <p style="text-align: center;">Christophe Fraser (Imperial College London)</p> <p style="text-align: center;">Chris Robertson (University of Strathclyde)</p>	<p style="text-align: center;">Session 11B General (contributed)</p> <p style="text-align: center;">Jake Ansell (University of Edinburgh) <i>Experimenting with modelling default of small and medium sized enterprises (SMEs)</i></p> <p style="text-align: center;">Alessandro Cardinali (University of Bristol) <i>Costationarity and stationarity tests for locally stationary time series with application to stock index returns</i></p> <p style="text-align: center;">Carolina Garcia-Martos (Universidad Politécnica de Madrid) <i>Seasonal dynamic factor analysis and bootstrap inference: application to electricity market forecasting</i></p>

Break...break...break....break...break...break...break....break...break...break...break....break...break...break...break....break

11.00 to 12.00	<p style="text-align: center;">Session 12A Improving Official Statistics – critical friends (Invited)</p> <p style="text-align: center;">Jim Cuthbert (Independent statistician) <i>Do Official Statistics provide an adequate basis for the debate about the UK economy?</i></p> <p style="text-align: center;">Margaret Cuthbert (Independent economist) <i>Do Official Statistics provide an adequate basis for debate about Scottish Independence</i></p> <p style="text-align: center;">Jill Leyland (RSS vice-president and chair of the National Statistics Working Group) <i>Improving Official Statistics – what the RSS is doing</i></p>	<p style="text-align: center;">Session 12B Missing data in repeated measures studies (contributed)</p> <p style="text-align: center;">Mouna Akacha (University of Warwick) <i>Analysing the rate of change in a longitudinal study with missing data, taking into account the number of contact attempts</i></p> <p style="text-align: center;">Shona Fielding (University of Aberdeen) <i>How useful is a reminder system in collection of follow-up quality of life data in clinical trials?</i></p> <p style="text-align: center;">Jane Hutton (University of Warwick) <i>Modelling health scores with the multivariate skew normal</i></p>
----------------	---	---

12:10 to 13.30	[Appleton 4]
	<p style="text-align: center;">Plenary 7 Panel discussion – the future of statistics and the RSS</p> <p style="text-align: center;">Karen Dunnell (Former National Statistician) <i>Perspective from Official Statistics</i></p> <p style="text-align: center;">Sara Hughes (Director of Statistics, GSK and PSI outgoing chair) <i>Perspective from the pharmaceutical industry</i></p> <p style="text-align: center;">Denise Lievesley (King's College London)</p> <p style="text-align: center;">David Leslie (University of Bristol) <i>The role of the emerging generation</i></p>

Close of conference, 'lunch to go' available....Close of conference, 'lunch to go' available....Close of conference, 'lunch to go' available....

[Appleton 1]

Session 11C
Bayes (contributed)

David Elston

(Biomathematics and
 Statistics Scotland)

Prior influence plots

Svetlana Tishkovskaya

(Postgraduate Statistics Centre, Lancaster University)
Bayesian estimation with optimal quantising of data

George Streftaris

(Heriot-Watt University)

*Bayesian inference for stochastic epidemic models
 with non-exponential tolerance to infection*

[Appleton 3]

Session 11D
Health 9 (contributed)

Neil Hawkins

(University of York)

*You can run but you cannot hide: data analysis and
 decision-making in a resource limited healthcare system*

Adele Marshall

(Queen's University Belfast)

*Classification and phase-type modelling of patient
 emergency admissions in hospital*

...break...break...break....break...break...break...break....break...break...break...break....break...break...break...break....

Session 12C
General (contributed)

Peter Green

(University of Bristol)

*Sensitivity of inferences in forensic genetics to assumptions
 about founding genes*

Kevin Hayes

(University of Limerick)

*Simultaneously testing means and variances from paired-
 samples*

Valerie Isham

(University College London)

Rumours and epidemics on random networks

Session 12D
Health-related 10 (contributed)

Irina Chis Ster

(University College London, MRC Centre of
 Epidemiology for Child Health)

*Estimating the force of infection of chickenpox in young
 children in the UK*

Denis Mollison

(Heriot-Watt University)

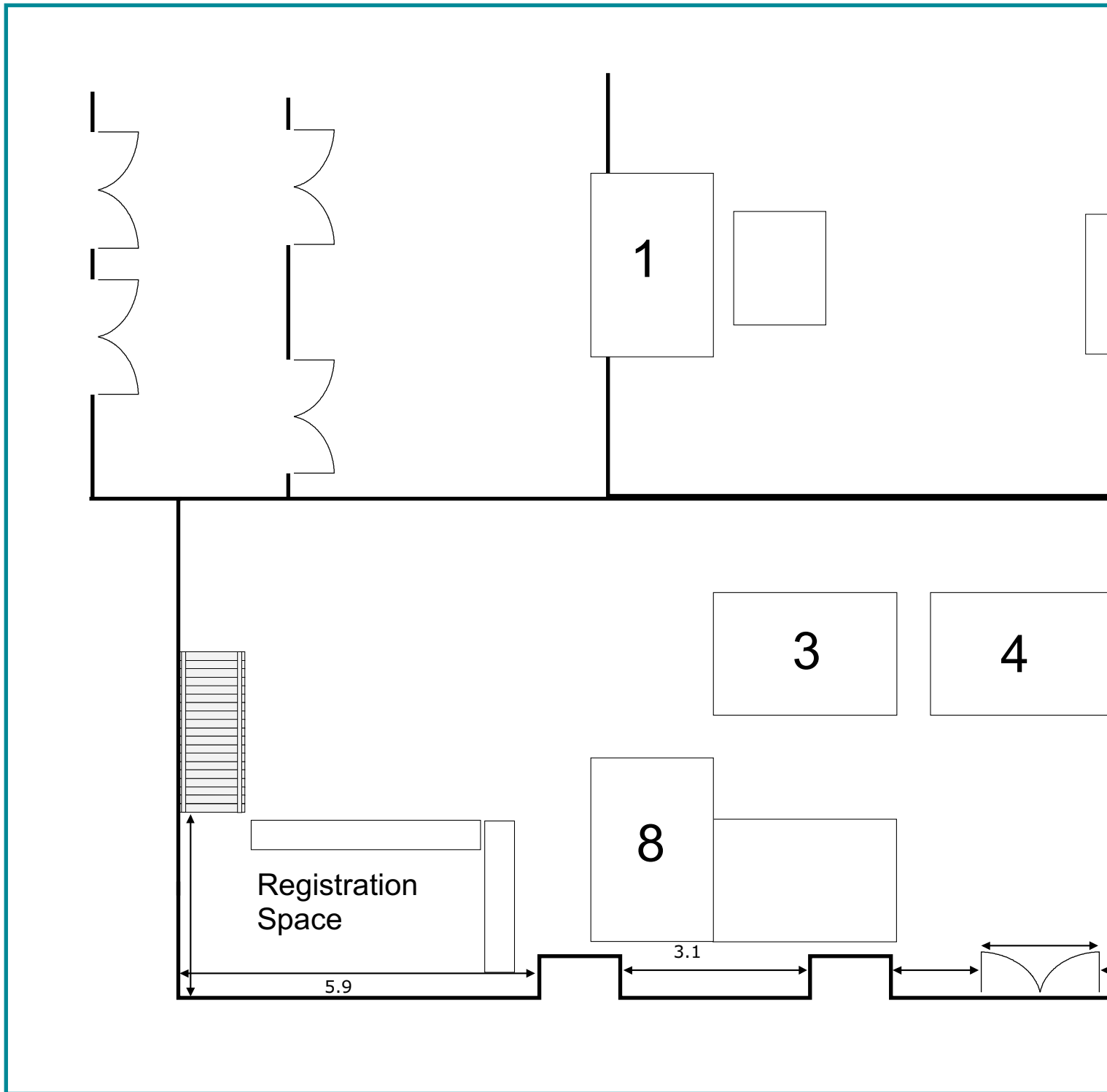
Small worlds and giant epidemics

James P Scanlan

(Attorney at Law)

*Measuring health inequalities by an approach
 unaffected by the overall prevalence of the outcomes at
 issue*

o go' available.....Close of conference, 'lunch to go' available.....Close of conference, 'lunch to go' available....



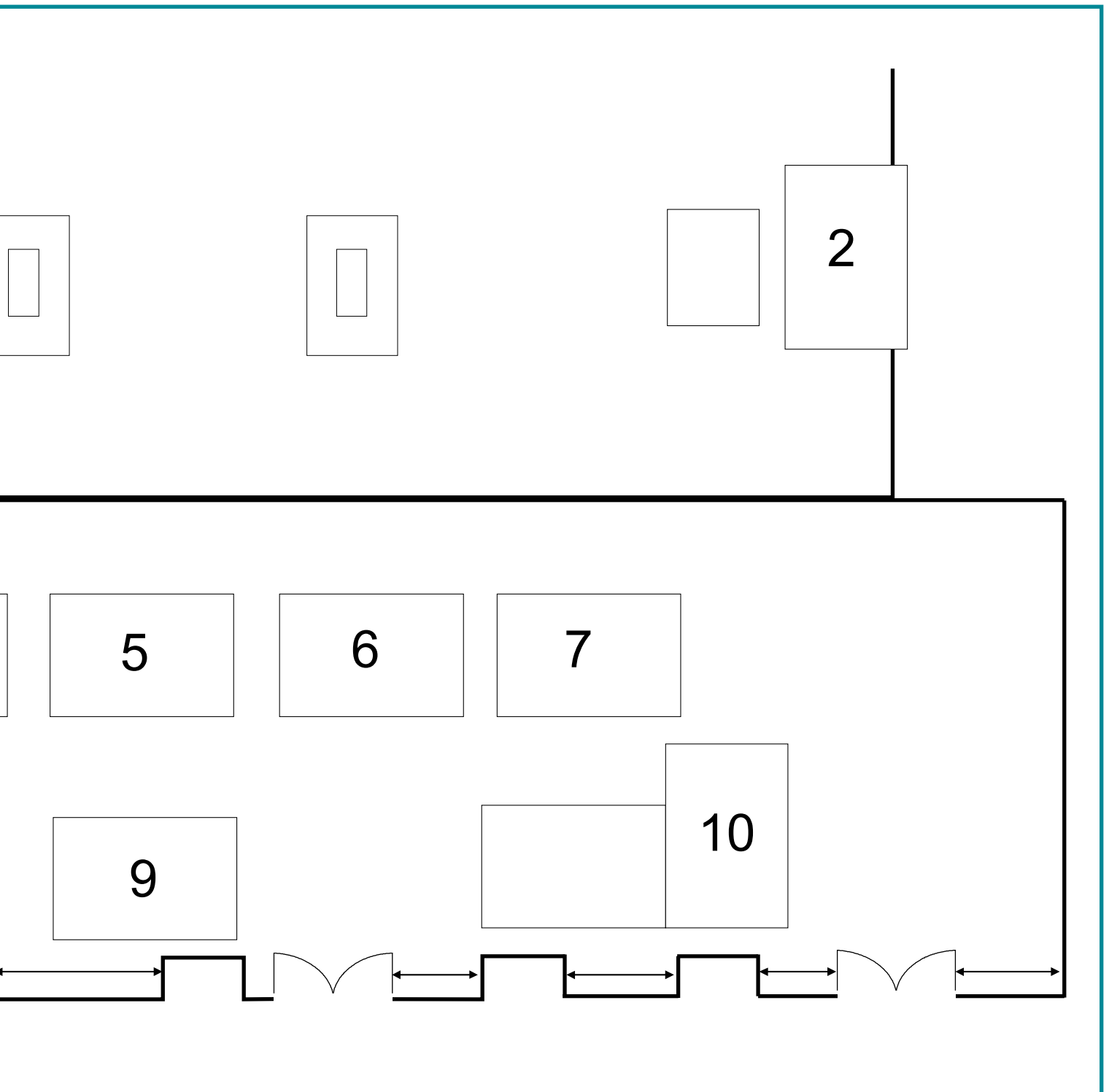
Key to exhibitors

1 Edinburgh Convention Bureau
(local information)

2 Taylor & Francis

3 Minitab

4 Oxford University Press



5 ● ESRC Census Programme (*Tuesday only*)
 ● UK Statistics Authority
 (*Wednesday & Thursday*)

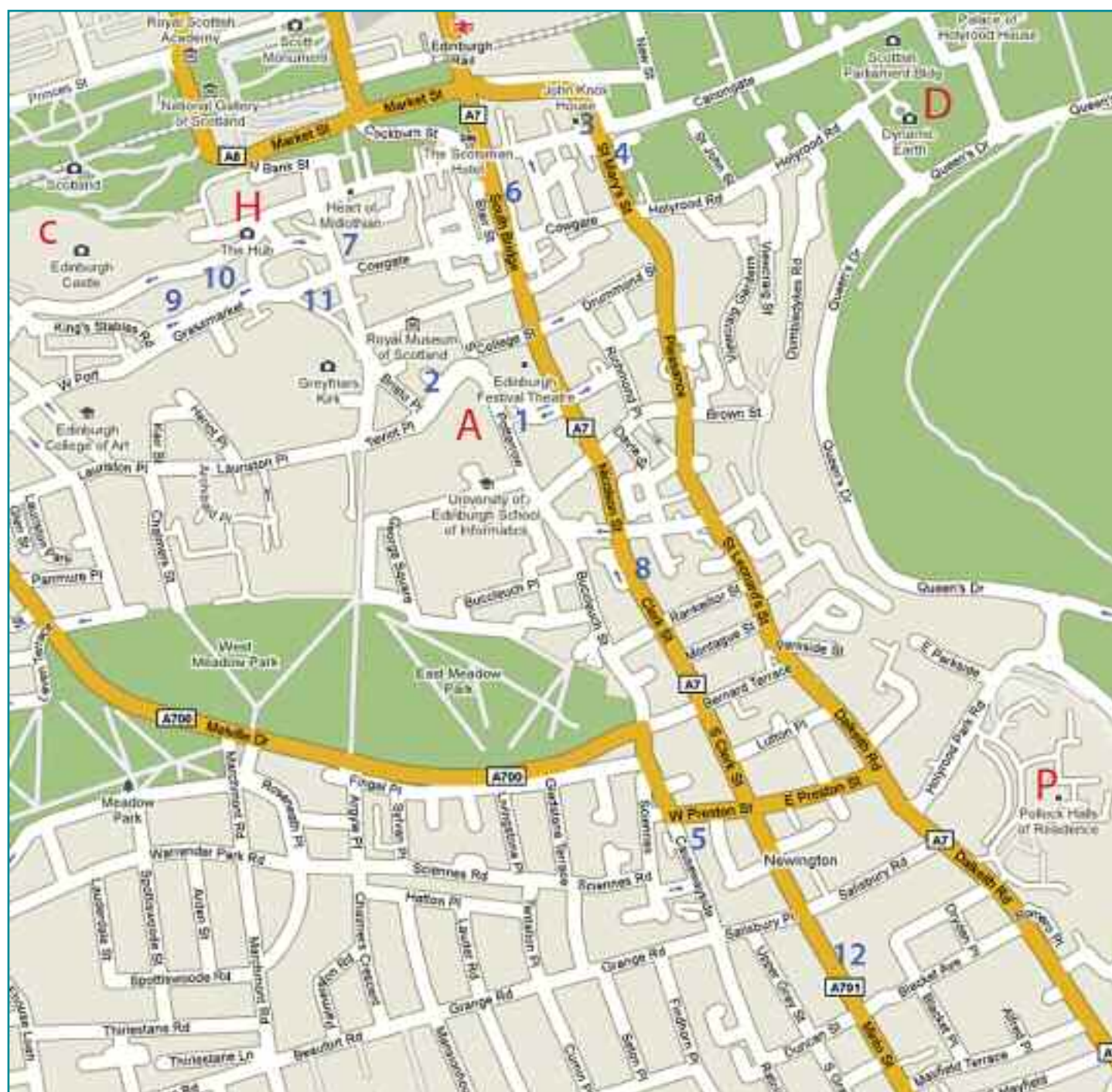
6 Palgrave McMillan

7 IOS Press

8 Royal Statistical Society

9 Postgraduate Statistics Centre
 (Lancaster University)

10 Wiley-Blackwell



Venues

- P** – Pollocks Halls
- A** – Appleton Tower
- C** – The Castle
- H** – The Hub
- D** – Dynamic Earth

Restaurants, Old Town

(In roughly increasing price order)

1. Double Dutch (café/restaurant)

Great quick bite, a few vegetarian options
27-29 Marshall Street, EH8 9BJ
Tel: 0131 667 9997.
Open Mon–Sun 9am–8pm.

2. Negociants (café/restaurant)

Students' favourite
45–47 Lothian Street, EH1 1HB
Tel: 0131 225 6313.
Open 10am until 1am.

3. The Tass (pub)

Great haggis, neeps and tatties.
1 High Street, EH1 1SR
Tel: 0131 556 6338.
Food served: Mon–Sat noon–4.30pm, 5–9pm; Sun
12.30–4.30pm, 5–9pm.

4. Empire (Turkish)

24 St Marys Street (Pleasance), EH1 1SU
Tel: 0131 466 0100
Open daily: Midday – 11pm, no alcohol but can
take your own. Live music in the evenings.

5. Hanedan (Turkish)

Great vegetarian selection; 41 Great Preston
Street, EH8 9PY, 0131 667 4242. (Closed Monday)
Lunch 12–3pm, Dinner: 5.30pm till late.

6. Pizza Express

23 North Bridge

7. Pizza Express

59/63 George IV Bridge

8. Kalpna (Indian vegetarian restaurant)

(arguably best in town)
2-3 St Patrick Square, EH8 9EZ
Tel: 0131 667 9890.
Lunch (all you can eat):
Monday–Saturday: 12pm–2pm,
Dinner: Monday–Saturday: 5.30pm–10.30pm,
Sunday 6pm–10.30pm

9. Petit Paris (French)

38–40 Grassmarket, EH1 2JU
Tel: 0131 226 2442
Food served: Monday–Sunday, noon–3pm,
5.30pm–10pm (until 11pm on Fri/Sat). (2 courses
and coffee for £9.99 if seated between 5.30pm and
6.30pm)

10. Maison Bleue (French and North African)

36-38 Victoria Street, EH1 2JW
Tel: 0131 226 1900.

11. The Outsider (Brasserie, modern setting)

15-16 George IV Bridge, Edinburgh, EH1 1EE
Tel: 0131 226 3131

12. The New Bell (Modern Scottish, traditional setting. Above a pub called The Old Bell.)

233 Causewayside, EH9 1PH
Tel: 0131 668 2868.
Early evening menu (Monday to Sunday from
5.30pm to 6.45pm) Two courses £14.50, three
courses £17.50.

Thanks and acknowledgements to those responsible for organising the conference

Members of the conference programme committee

Guy Nason, chairman (*University of Bristol*)

Antony Fielding (*University of Birmingham*)

Paul Kiff (*University of East London*)

Ruth King (*University of St Andrews*)

Alison Macfarlane (*City University*)

Adele Marshall (*Queen's University, Belfast*)

Richard Samworth (*University of Cambridge*)

Mary Sweetland (*NHS, Scotland/Chair, Local Organising Committee*)

Ben Torsney (*University of Glasgow*)

Stephen Walters (*University of Sheffield*)

Members of the local organising committee

Mary Sweetland, chairman (*NHS Scotland, ISD*)

Katy Barratt (*Scottish Government*)

Darius Blaszcak (*NHS Scotland, ISD*)

Natalia Bochkina (*Edinburgh University*)

Anthony Fielding (*retired, Birmingham University*)

Alan Forrest (*Royal Bank of Scotland*)

Scott Heald (*NHS Scotland, ISD*)

Cecilia MacIntyre (*General Registrar's Office Scotland*)

Brian Miller (*Institute of Occupational Medicine*)

Gillian Raab (*Statistical Consultant*)

Jill Sales (*Biomathematics & Statistics Scotland*)

Mairi Spowage (*Scottish Government*)

Jill Tefer (*Statistical Consultant*)

Staff

Paul Gentry, Teresa Dewane, Sarah Barker, Charlotte Stovell, Mawreen Chapman, Samantha Ballard, Louisa Ashby and fellow staff at the Royal Statistical Society

*Directory and Abstracts Booklet
designed and produced by
Wild Strawberry Communications
(www.wildstrawberry.uk.com);*

printed by WCS Digital, WC1X 0AS

New GenStat 12th edition - all your statistical data analysis needs in one package

GenStat software has long been the choice of statisticians across the world.

Now with new and enhanced features, GenStat again proves itself to be at the forefront of statistical computing and demonstrates GenStat's understanding of the needs of scientists, statisticians and researchers.

New features include the addition of stability coefficients and genotype + genotype-by-environment biplots for use in variety trials, quantile regression and a suite of menus for QTL analysis.

Further enhancements have been made to the graphics. Facilities to allow interactive selection between plotting components enable users to add components to a basic plot - aiding the interpretation of data.

As with all new releases of GenStat, there are many additions to the core areas such as regression, REML and multivariate analysis. These developments ensure GenStat remains *the* data analysis software package of choice for scientists, statisticians and researchers.

See how GenStat can help your work:
www.genstat.co.uk

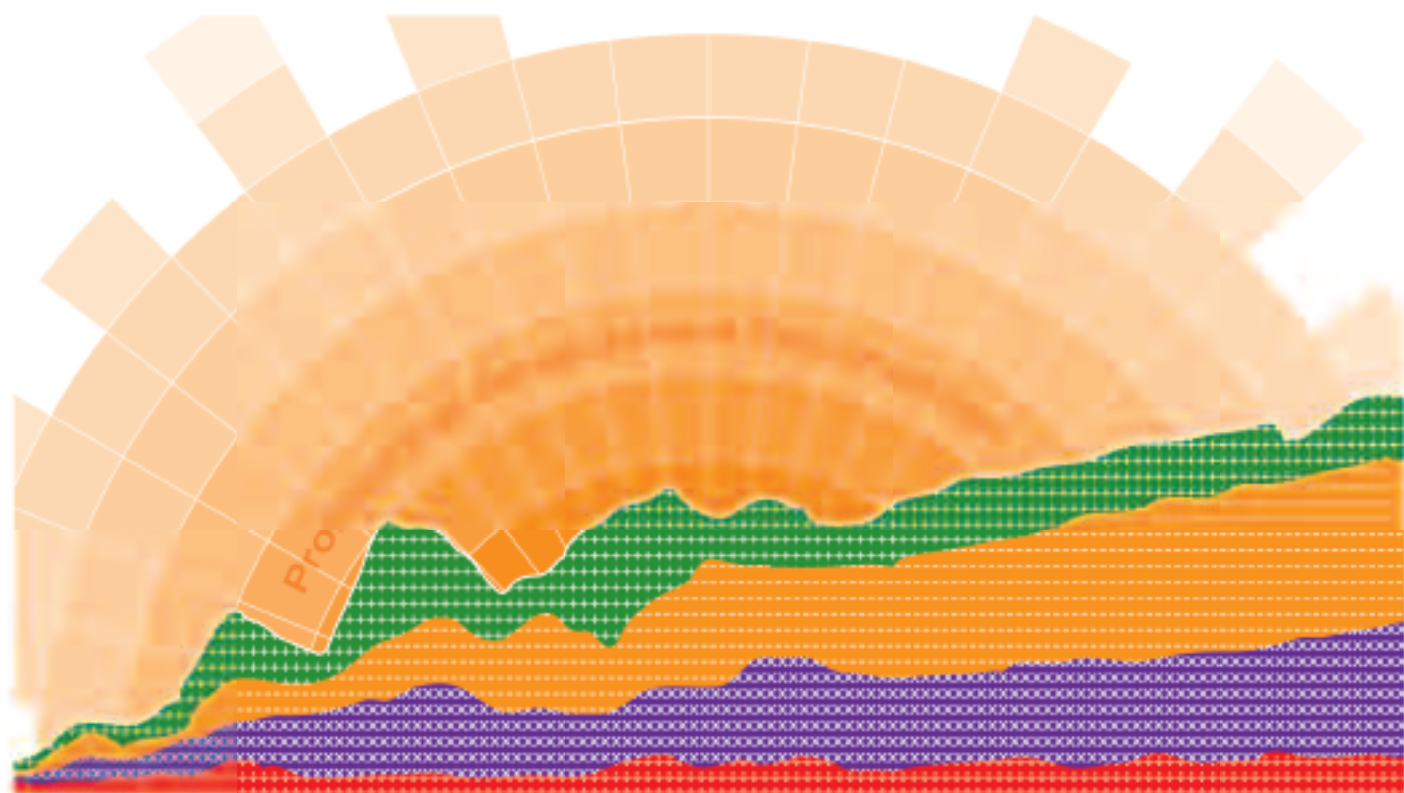
“ I have so many unknowns to contend with, but my data analysis software isn't one of them. ”

www.genstat.co.uk



GenStat[®]
software for bioscience

VSN International Ltd
5 The Waterhouse
Waterhouse Street
Hemel Hempstead
Hertfordshire
HP1 1ES, UK
T: +44 (0) 1442 450 230
F: +44 (0) 8701 215 653
E: info@genstat.co.uk



Lancaster Postgraduate Statistics Centre

Short Courses 2009-2010

www.maths.lancs.ac.uk/psc



Continuing Professional Development Courses in Statistics 2009/2010

Lancaster Postgraduate Statistics Centre is the only HEFCE funded Centre of Excellence for Teaching and Learning that uniquely specialises in postgraduate statistics. Courses are taught by members of the Statistics Group within the Department of Mathematics and Statistics.

What do we offer?

We offer a wide range of statistics courses and a variety of ways to learn. The following courses run regularly each year. Please check our website for the most up-to-date information.

For more information including fees or to book on a short course, please visit our website www.maths.lancs.ac.uk/psc or email us at psc@lancaster.ac.uk.

Statistics for Social Scientists and Health Professionals

Introductory short courses

Introduction to SPSS (SPSS I)	28-29 October 2009
Secondary Data Analysis	28 November 2009
Atlas II	3 December 2009
Questionnaire Design	Date to be arranged
Sampling Design	Date to be arranged

Going further with statistics:

Using R Software	12-13 November 2009
Generalised Linear Models	18-20 November 2009
Duration (or Survival) Analysis	20-21 January 2010
Data Mining Techniques	3-4 February 2010
Using STATA	17-18 February 2010
Bayesian Methods	25-26 February 2010
Intermediate SPSS for Windows (SPSS II)	3-4 March 2010
Structural Equation Modelling	17-18 March 2010
Multi-Level Models	21-22 April 2010
Methods for Missing Data	28-29 April 2010
Longitudinal Data Analysis	Date to be arranged

MSc in Applied Social Statistics: Learn about statistical methods used in criminology, health and the social sciences. Study the above courses as part of our MSc.

Specialist Topics in Medical and Pharmaceutical Research

Short courses

Genomics: Technologies and Data Analyses	14 December 2009
Pharmacological Modelling	25-28 January 2010
Survival and Event History Analysis	8-11 February 2010
Adaptive and Bayesian Methods in Clinical Research	22-25 February 2010

MSc in Statistics: Choose optional pathways in medical, pharmaceutical or environmental statistics. Study advanced techniques. For those with a background in mathematics or statistics.

